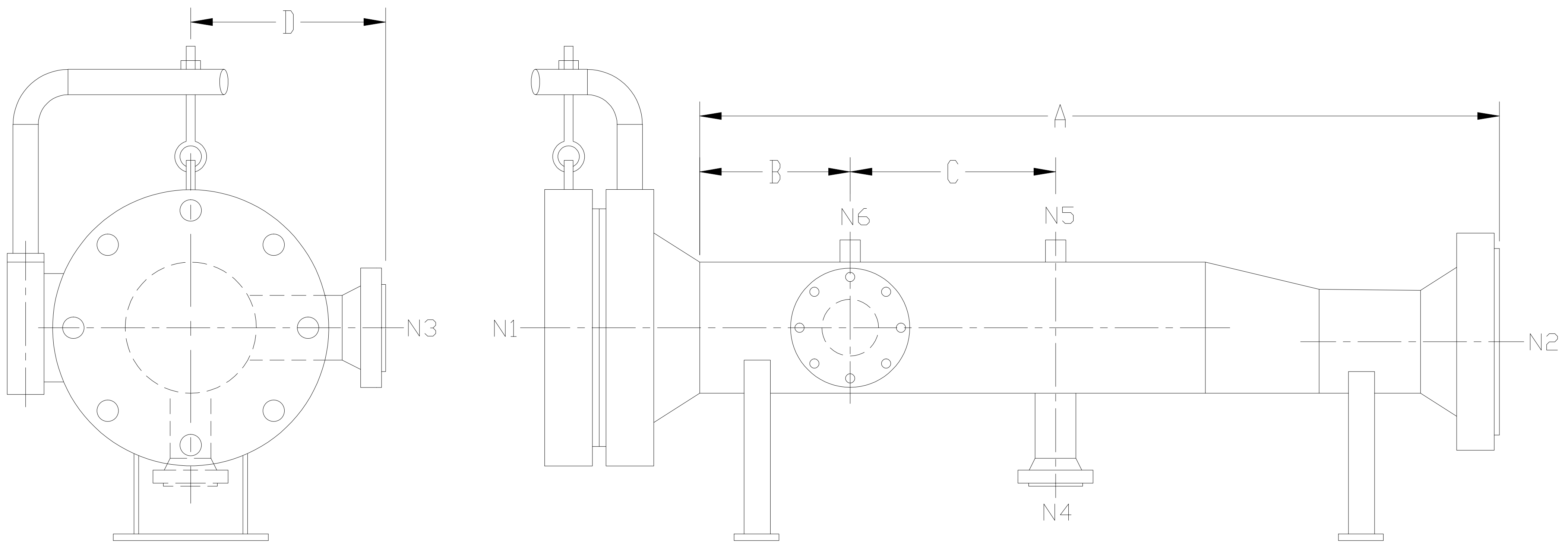


MODEL: PIG LAUNCHER



LINE SIZE	N1	N2	N3(kicker)	N4(drain)	N5(vent)	N6(spare)	A	B	C	D
4"	6"	4"	2"	1"	1"	1"	52"	12"	15"	11"
6"	8"	6"	3"	2"	1"	1"	56"	12"	16"	12"
8"	10"	8"	4"	2"	1"	1"	58"	14"	18"	13"
10"	12"	10"	4"	2"	1"	1"	64"	17"	18"	14"
12"	16"	12"	6"	4"	1"	1"	68"	19"	18"	16"
14"	18"	14"	6"	4"	1"	1"	76"	22"	18"	16"
16"	20"	16"	8"	4"	1"	1"	90"	26"	20"	17"
18"	22"	18"	10"	6"	1"	1"	96"	30"	20"	20"
20"	24"	20"	10"	6"	2"	1"	98"	32"	22"	21"
22"	26"	22"	10"	6"	2"	1"	100"	33"	24"	22"
24"	28"	24"	10"	6"	2"	1"	104"	34"	26"	23"
26"	30"	26"	10"	6"	2"	1"	108"	36"	26"	24"
28"	32"	28"	12"	6"	2"	1"	110"	36"	28"	26"
30"	34"	30"	12"	8"	2"	1"	114"	38"	28"	28"
36"	40"	36"	14"	8"	2"	1"	122"	40"	32"	32"

Notes:

DESIGN CODES: ASME SEC. VIII DIV.1 OR B31.3

DIMENSION CAN BE CHANGED ACCORDING TO CUSTOMER'S REQUIREMENT

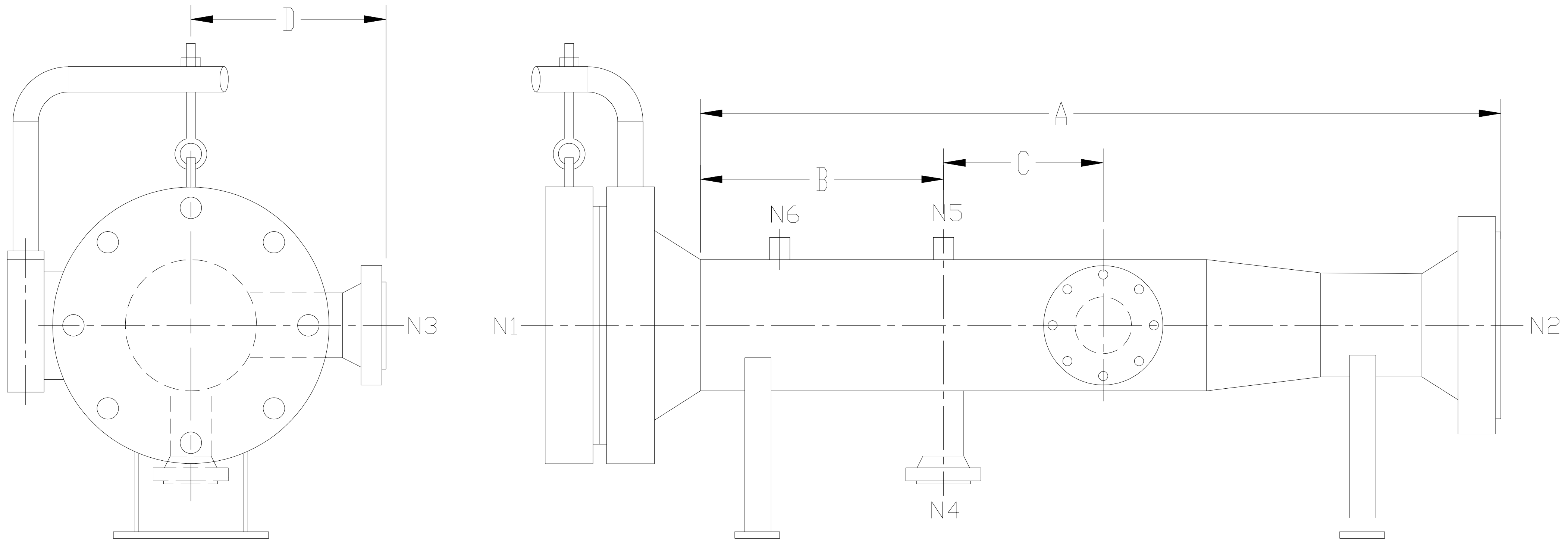
NDE PER CODES AND CUSTOMER'S SPEC.

QUICK OPENING THREADED CLOSURE ALSO AVAILABLE

OTHER CONNECTIONS ARE AVAILABLE

SADDLE SUPPORTS ALSO AVAILABLE

MODEL: PIG RECEIVER



LINE SIZE	N1	N2	N3(bypass)	N4(drain)	N5(vent)	N6(spare)	A	B	C	D
4"	6"	4"	2"	1"	1"	1"	62"	26"	7"	11"
6"	8"	6"	3"	2"	1"	1"	66"	23"	8"	12"
8"	10"	8"	4"	2"	1"	1"	74"	31"	9"	13"
10"	12"	10"	4"	2"	1"	1"	82"	36"	10"	14"
12"	16"	12"	6"	4"	1"	1"	90"	41"	11"	16"
14"	18"	14"	6"	4"	1"	1"	106"	49"	12"	16"
16"	20"	16"	8"	4"	1"	1"	113"	50"	14"	17"
18"	22"	18"	10"	6"	1"	1"	120"	49"	16"	20"
20"	24"	20"	10"	6"	2"	1"	124"	50"	16"	21"
22"	26"	22"	10"	6"	2"	1"	126"	51"	16"	22"
24"	28"	24"	10"	6"	2"	1"	130"	52"	18"	23"
26"	30"	26"	10"	6"	2"	1"	138"	56"	18"	24"
28"	32"	28"	12"	6"	2"	1"	148"	60"	20"	26"
30"	34"	30"	12"	8"	2"	1"	160"	64"	22"	28"
36"	40"	36"	14"	8"	2"	1"	172"	68"	24"	32"

Notes:

DESIGN CODES: ASME SEC. VIII DIV.1 OR B31.3
DIMENSION CAN BE CHANGED ACCORDING TO CUSTOMER'S REQUIREMENT
NDE PER CODES AND CUSTOMER'S SPEC.
QUICK OPENING THREADED CLOSURE ALSO AVAILABLE
OTHER CONNECTIONS ARE AVAILABLE
SADDLE SUPPORTS ALSO AVAILABLE